

MONTHLY MEMBERSHIP PROGRESS REPORT

LOCATION MARYLAND

District 22 A

Results as of: 5/31/2021

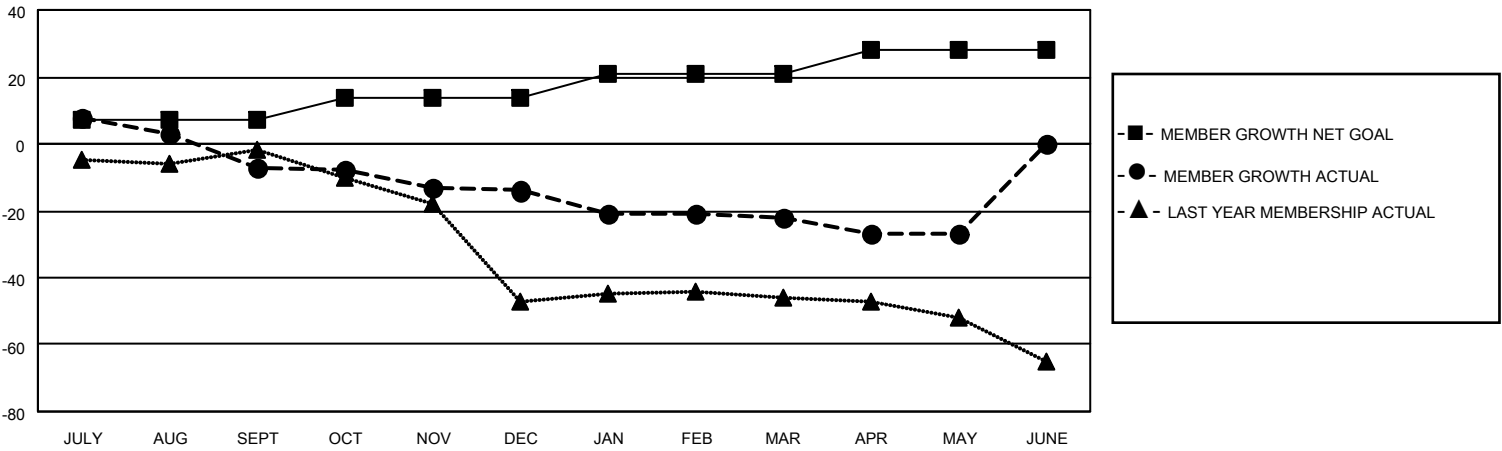
Clubs			
RESULTS FOR 2020-2021			
QUARTER	NEW CLUB GOAL	NEW CLUBS	DROPPED CLUBS
JULY/AUG/SEPT	0	0	0
OCT/NOV/DEC	0	0	0
JAN/FEB/MAR	1	0	0
APR/MAY/JUNE	0	0	0

Members			
RESULTS FOR 2020-2021			
QUARTER	MEMBER GROWTH NET GOAL	MEMBER GROWTH ACTUAL	DROPPED MEMBERS ACTUAL (including transfers)
JULY/AUG/SEPT	7	20	22
OCT/NOV/DEC	7	4	11
JAN/FEB/MAR	7	4	12
APR/MAY/JUNE	7	3	8

GOALS AND ACTUAL NEW CLUBS CUMULATIVE



GOALS AND ACTUAL MEMBERS CUMULATIVE



DROPPED CLUBS: 0	8 CLUBS OF 26 ADDED 1 OR MORE NEW MEMBERS	<u>GENDER DISTRIBUTION</u>
<u>DROPPED MEMBERS</u>	CLICK HERE FOR CUMULATIVE MEMBERSHIP DATA	MALE 399 (63.13%)
DECEASED 12		FEMALE 233 (36.87%)
CLUB CANCELLED 0		TOTAL FAMILY UNIT MEMBERS 107
OTHER 41		FAMILY MEMBERS PAYING HALF DUES 54
TOTAL 53		